



SAPIENT
Insurance Surveyors &
Loss Assessors Pvt. Ltd.

www.surveyors-sapient.com

Our service promise...



Communication and
Collaboration.



About Sapiient Surveyors

Sapiient Insurance Surveyors has considerable expertise, providing exceptional service and proactive advice to help clients achieve their business objectives. In 1988 Mr. D.K. Malhotra started the business under the name and style of M/s Malhotra Associates. Subsequently the entire business of M/s Malhotra Associates was passed on to its successor company namely M/s Sapiient Services Pvt. Ltd. (SSPL). In the year 1998, with time Sapiient Services diversified into other related complementary business activities namely Valuations of Tangible & Intangible Assets, Techno-Economic Viability studies etc. The total business activities of M/s Sapiient Services Pvt. Ltd. were split into Insurance related business and Non-Insurance i.e. Chartered Engineering services, Valuations of Tangible & Intangible Assets, Third Party Quality Inspection etc.

Sapiient Insurance Surveyors has a team of experienced engineers and associated technical staff to provide a wide range and focused claim service across a range of specialist disciplines & proven expertise for handling services all over India. Over the last 30 years period since the establishment of the firm, the company has surveyed and handled over 60,000 losses cases of various types & various magnitudes.

Sapiient Insurance Surveyors is an independent network of qualified surveyors providing insurance auxiliary services across India and are certified and registered with Insurance Regulatory and Development Authority of India (IRDAI).

Our Team

Core Members/ Directors are as under:-



Mr. Devender Kumar Malhotra, a Chartered Engineer, AIII and Qualified Registered Valuer having rich and diverse experience of more than 30 years in Insurance Survey & Loss Assessment, Valuations and industry experience of 07 years in Thermal Power Plants/ Cement Plants. Actively involved in Techno Economic Viability Studies and fixation of consumption norms for DGFT apart from Survey & Loss Assessment.

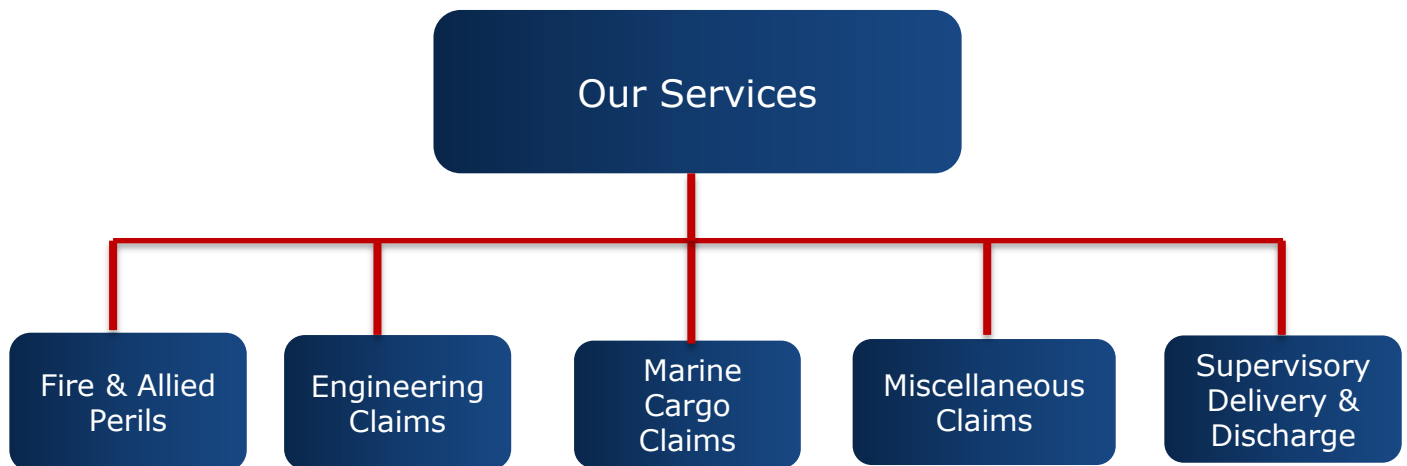
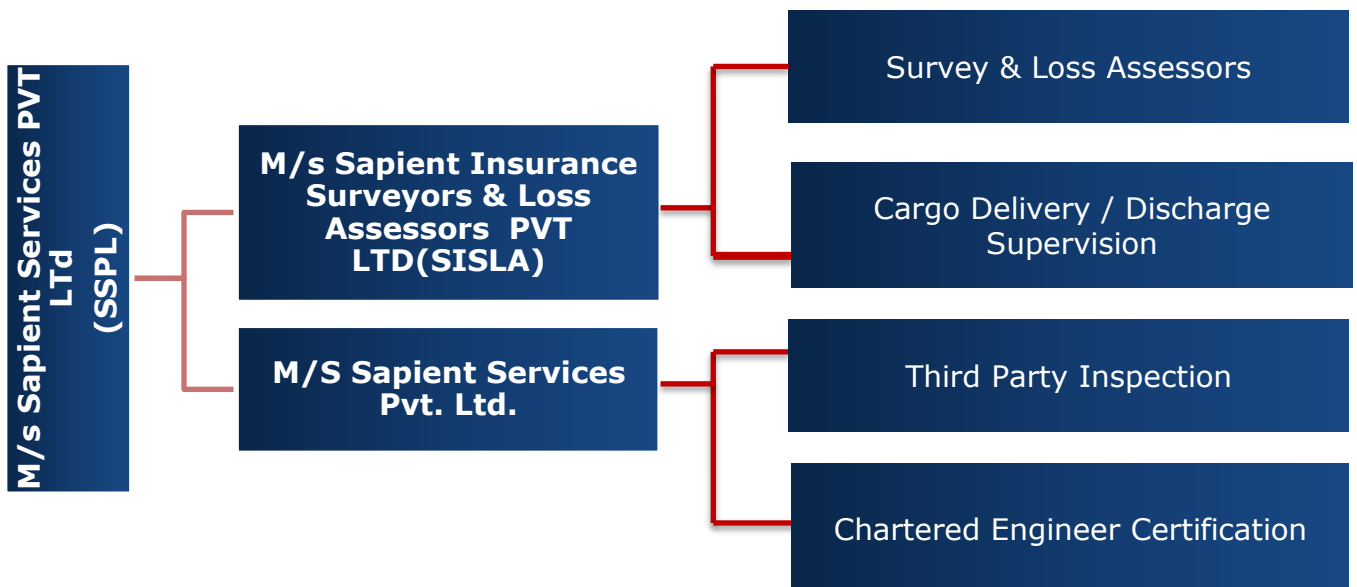


Mr. Jatin Bhanubhai Joshi, a Chartered Engineer having an experience of more than 30 years into the profession and has handled claims of various magnitude of diverse industry.



Mr. Ketan Shah, a Mechanical Engineer having total 30 years of experience with 05 years of refrigeration & air-conditioning industry experience before coming into the survey & loss assessment profession. Expertise in risk inspection, fire & miscellaneous claims. Has handled claims in various industries.

Area of Specialization



FIRE & ALLIED PERILS

We have very wide experience of handling large claims. Our approach to each claim is different. We appreciate the fact that large claims require immediate attention, diverse expertise and manpower resources.

We ensure complete confidentiality to all clients and abide by a code of Professional practice, Ethics and Rules of Conduct.



SUPERVISORY DELIVERY & DISCHARGE

Inspection and Monitoring of Imported & Domestic Consignment of Bulk Cargo, Providing End to End Services to various large corporates towards Discharge Supervision, Ascertainment of weight and conducting related quality checks of Liquid Cargo received at Ports and at the consignee's specified final destination.



ENGINEERING CLAIMS

Engineering equipment's & projects are subject to some of the harshest conditions. The resulting effect is breakdowns, leading to damages. At Sapient, we have expert engineering surveyors, with a strong background, capable of identifying, assessing and valuing damages to the best possible extent.

In 03 decades of experience, we have worked with most of major insurers in the country, and provided them with swift and best-in-the-market claims reports. Some highlights of our expertise in Engineering Surveys include:

- Civil Construction & Erection Risks
- Survey of equipment & plants
- Telecom / ATM
- Cause and effect investigation
- All major engineering losses



MISCELLANEOUS CLAIMS

All hazards that are not covered under fire, marine or engineering insurance are classified as miscellaneous. For example bank indemnity, cash losses, jeweller block claims, etc.

We have specialists to handle this chunk of insurance claim survey across India. They begin by identifying, the nature of the loss, and subsequently move to assessing and providing the best possible monetary resolution to your claims. Our services and expertise in this segment include:

- Financial line coverage
- Affinity Programs
- Routine Robbery / Burglary Claims
- Films & Sports Events



MARINE CLAIMS

Marine Cargo takes longer in transit, and ipso facto, it is subject to more risks. That's why at Sapient, we have employed expert Marine surveyors, with a keen eye for cargo surveys. Our surveyors are also well versed with loss prevention measures of cargo.

In cases of damage or loss, we work diligently to protect our client within the limits of the cargo insurance policy, in adherence to the ethical standards, we are respected in the industry for. Our Marine Insurance Surveys are in compliance with all the requisite standards to ensure the claim delivery process is smooth, swift and trouble free. Our area of expertise in Marine Cargo includes:-

- Loss Investigations
- Transit Damages / Accidents



OUR EXPERIENCE

With over 30 years in industry of survey & loss assessment, we have got the opportunity of serving Indian as well as International Corporates, covering the following sectors:-

- Agro-based industry
- Banking & Financial
- Building
- Cement
- Construction Equipment
- Consumer Electronics
- Dairy and Food Products
- Electronics and Communication
- Fertilizers
- Footwear Industry
- Garment Manufacturing
- Glass Industry
- Grid and Transmission
- Home Furnishing
- Hospitality
- Industry Machinery & Tools
- Information Technology
- Infrastructure
- Jute & Cotton Industry
- Medical Equipment
- Metal & ore Processing
- Office Equipment
- Packaging Industry
- Pharmaceutical
- Plastic Industry
- Ports
- Process & Chemical Industry
- Publishing Industry
- Pulp & Paper Industry
- Rolling Mills
- Semi- Conductors
- Steel
- Supermarket
- Textile Industry
- Tobacco Industry
- Toys & Games
- Utensils
- Utilities: Boilers/ Pumps/Compressors/HVAC.



A white puzzle with one piece missing, set against a dark blue background. The missing piece is a dark blue shape, and the text is overlaid on it.

Helping clients put the
pieces together for
more than 30 years

WHY SAPIENT SURVEYORS ?

Manpower

Our team of professionals, all experienced in their respective domains, and having a high level of integrity. We are providing customized services as per the client requirements.

Regular Training

To keep pace with the fast changing scenario, we have regular training sessions for our engineers (Internal & External) to keep our service quality intact.

Processes

With strong processes in place, we have in-built critical checks to make the processes transparent and error-free. These processes are revisited on a regular basis for improvements.

Data Bank

Our systems are designed to capture the latest trends of costs, resulting in faster submission of reports.

Experience

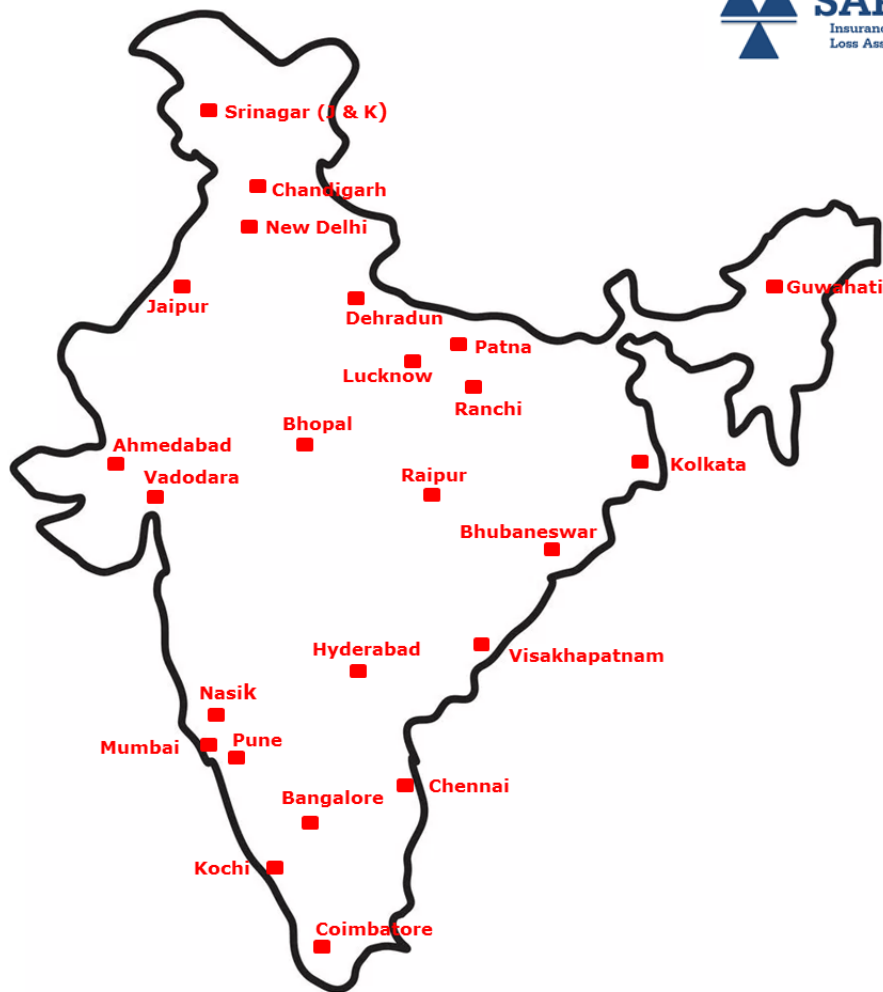
We have been in these domains for more than 30 years now. With experienced Professionals in-charge, we are able to provide all necessary technical inputs.

Volume Handling

We have been handling high volume of cases through controlled process, without compromising on quality and efficiency

Online Support

We offer online support for the latest status of the handled cases, which is updated on a regular basis.



Address:

Head Office:

L-83 Suraj Bhawan. Lajpat Nagar-II,
New Delhi-110024

Phone: 01129813234/5/6

Mobile: 9540162777/62888

Email:

surveyors@sapientservices.com

Website:

www.surveyors-sapient.com

Social Networking:

